



prosthetic lines EQUIPARABILI

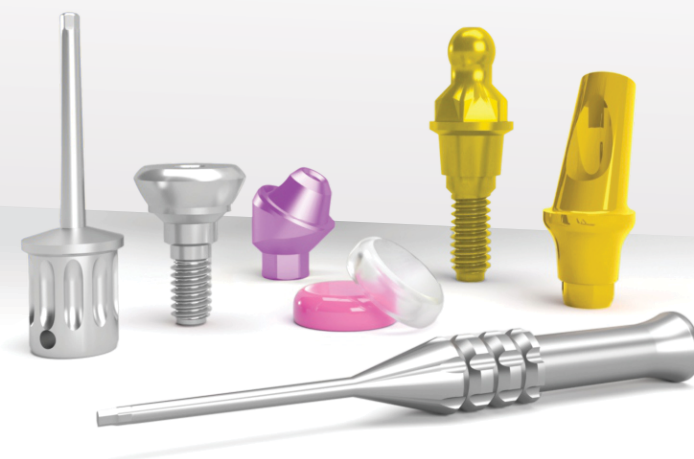
Abutments and implant-supported superstructures

- ASTRA TECH® - OSSEOSPEED TX®
- BIOHORIZON® - BIOLOCK®
- BIOMET® 3i® - CERTAIN®
- BIOMET® 3i® - EXTERNAL HEXAGON
- BTJ® - EXTERNAL®
- DEFCON® - TSH®
- DENTSPLY® - ANKYLOS®
- DENTSPLY® - FRIADENT XIVE®
- DIO® IMPLANT®
- DIO IMPLANT® - EXTERNAL®
- ECKERMANN® - EXTERNAL®
- GEASS® - ROMA®
- GEASS® - VENEZIA®
- GHIMAS® - EVO®
- IMPLANT DIRECT® - SWISHPLUST™
- IMPLANTUM®
- LIFECORE® - EXTERNAL®
- MEGAGEN® ANYONE®
- MEGAGEN® - ANYRIDGE®
- MEGAGEN® - EXFEEL INTERNAL®
- MEGAGEN® - EXFEEL EXTERNAL®
- MICRODENT® - UNIVERSAL®
- MIS® - MISTRAL®
- MIS® - SEVEN®
- NEODENT® - CM CONOMORSE®
- NEODENT® - GM GRANMORSE®
- NOBEL BIO CARE® - ACTIVE®
- NOBEL BIO CARE® - BRÄNEMARK®
- NOBEL BIO CARE® - REPLACE®
- OSSTEM® - SS-LINE®
- OXY IMPLANT® - (MD LINE EXT)®
- PHIBO® - TSH®
- STRAUMANN® - BONE LEVEL®
- STRAUMANN® - BLX®
- STRAUMANN® - TISSUE LEVEL®
- SWEDEN & MARTINA® - OUTLINK®
- SWEDEN & MARTINA® - PREMIUM KHONO®
- SWEDEN & MARTINA® - STARK®
- ZIMMER® - SCREW VENT®
- ZIMMER® - SWISSPLUS®



EQUIPARABILI

Abutments and implant-supported superstructures



Protesica
Rimovibile

Via privata Emilia Romagna, 13
26855 · Lodi Vecchio (LO) · Italy
(+39) 334.83.67.220
info@protesicarimovibile.com
www.protesicarimovibile.com



Protesica
Rimovibile

Today you can find the perfect connection with **IDENTIKIT**

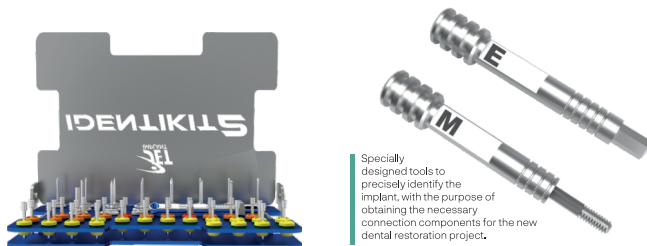
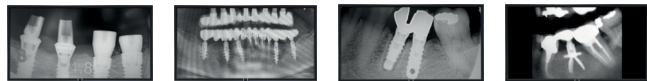
Over the past 40 years, a wide range of implant systems have been developed, each with distinct designs and characteristics, but dentists often face a large range of patients with **implants difficult to identify**.

The first question that comes up is: will we be able to identify the original brand of this system?

Will we be able to source and supply the prosthetic components?

The answer is yes, with us. In most cases, we can not only be able to identify the specific line to which the fixture belongs to, **but we also supply components even when they are no longer available on the market**.

With our **IDENTIKIT**, dentists can immediately and accurately verify the geometric shape, internal thread diameter and pitch using the tools available in the given kit. You can try **IDENTIKIT** free of charge by requesting it to one of our local representatives.



Specially designed tools to precisely identify the implant, with the purpose of obtaining the necessary connection components for the new dental restoration project.

Universal tools for implant prosthetics

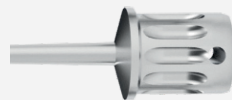


The Jet Implant **118 set** of tools is specifically designed for the tightening of implant prosthetic components.

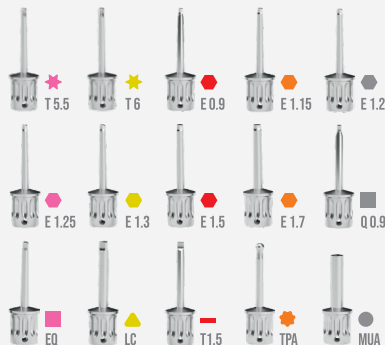
The tools included in the set are universal and compatible with 95% of implant systems available on the market. They can be used manually or connected to a torque wrench for precise tightening, according to the specifications of the implant lines.

This set is a must have for surgeons who work with implant systems outside of their usual practice and for dental laboratories handling a wide variety of prosthetic components available on the market.

All tools in the **118 set** are made of tempered medical-grade steel, fully compliant with European guidelines. The entire set is washable and autoclavable. The handle is designed for both manual use and integrated with a torque wrench.



Handle usable both manually and with a torque wrench.



NEW TPA WRENCH ANGLED SCREWS



The main goal of **Protesica Rimovibile** is to meet the needs of dentists and dental technicians by offering a wide range of abutments and superstructures for implantology. The various prosthetic lines are categorized to allow both dentists and dental technicians to easily identify their needs.

The **Equiparabili** catalogue provides an easily accessible list of products to facilitate quick searches among the different prosthetic lines, particularly for those with no identifiable marks.

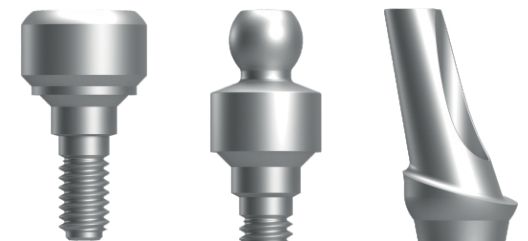
A thorough market analysis in collaboration with dentists and dental technicians with over 30 years of experience, allowed us to identify the most used lines developed in the last years, which are included in the catalogue.

A unique feature of **Equiparabili** is the "Accessories" section, which includes different sets of screwdrivers designed for both dental practices and laboratories.

Our screwdriver sets consist of universal tools for implant prosthetics, suitable for tightening implant prosthetic components.

Protesica Rimovibile, is proud to introduce an innovative new set for implant recognition, called Identikit.

The complete catalogue is also available in PDF on the website **www.protesicarimovibile.com**



In addition to the Equiparabili catalogue, Protesica Rimovibile offers an innovative system for the recognition and identification of dental implants: **IDENTIKIT**.



Scan the QR code and visit our website